

PROJECT GUIDE

Monochromatic Kitchen Set

B&W POT HOLDER

1 - 50 g ball of DMC Natura Just Cotton color N01 Ibiza
1 - 50 g ball of DMC Natura Just Cotton color N11 Noir
5 mm crochet hook
DMC tapestry needle
Scissors

Abbreviations

rnd - Round
ch - chain
sl st - slip stitch
st - stitch
sc - single crochet

Instructions

All the work is made in double thread. Get both ends of the yarn ball and work with them together as normal single thread.

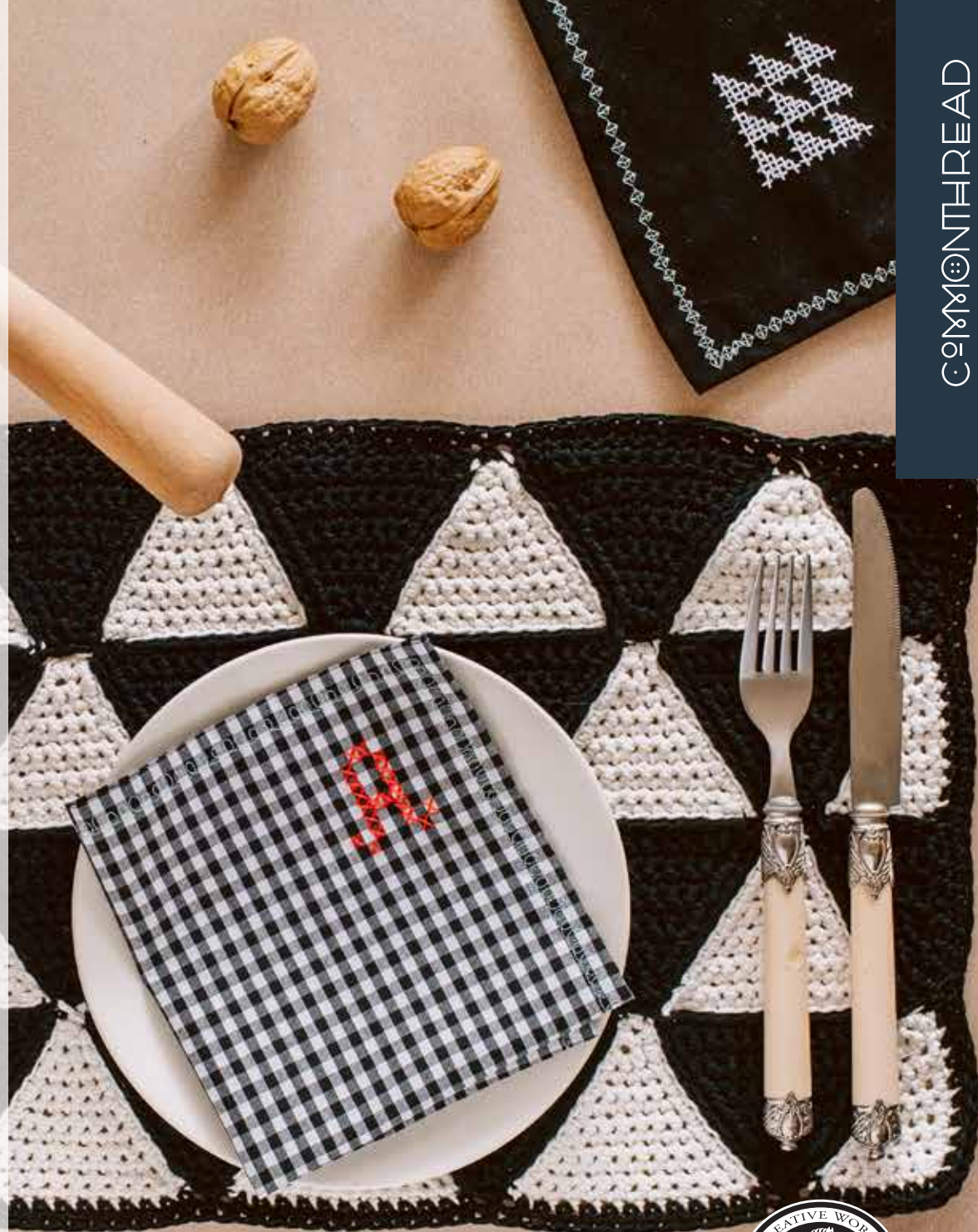
Triangle

With N11 Noir

Rnd 1: Ch 3
Rnd 2: 2 sc into the 3rd ch.
Rnd 3: 1 sc, 2 sc into same st
Rnd 4: 2 sc, 2 sc into same st
Rnd 5: 3 sc, 2 sc into same st
Rnd 6: 4 sc, 2 sc into same st
Rnd 7: 5 sc, 2 sc into same st
Rnd 8: 6 sc, 2 sc into same st
Rnd 9: 7 sc, 2 sc into same st
Rnd 10: 8 sc, 2 sc into same st
Rnd 11: 9 sc, 2 sc into same st
Rnd 12: 10 sc, 2 sc into same st
Rnd 13: 11 sc, 2 sc into same st
Rnd 14: 12 sc, 2 sc into same st
Rnd 15: 13 sc, 2 sc into same st
Rnd 16: 14 sc, 2 sc into same st
Rnd 17: 15 sc, 2 sc into same st
Rnd 18: 16 sc, 2 sc into same st
Rnd 19: 17 sc, 2 sc into same st
Rnd 20: 18 sc, 2 sc into same st
Rnd 21: surround the triangle making 1 sc into every st and rnd, make 8 ch on the top of the triangle and keep waiving 1 sc into every st and rnd. Sl st.

With N01 Ibiza

Repeat same instructions from rnd 1 to rnd 20
Rnd 21: surround the triangle making 1 sc into every st and rnd. Sl st.





Assembly

Moisten and block the triangles over a pillow before join them.

Use N11 Noir and a DMC tapestry needle to join the triangles together.

Once the triangles are joined together, surround the pot holder making 1 sc into every st and rnd. Make 8 sc into the 8 ch on the top and keep waiving 1 sc into every st and rnd . Sl st.

B&W PLACEMAT

2 - 50 g balls of DMC Natura Just Cotton color N01 Ibiza

3 - 50 g balls of DMC Natura Just Cotton color N11 Noir

5 mm crochet hook
DMC tapestry needle
Scissors

Abbreviations

rnd - Round

ch - chain

sl st - slip stitch

st - stitch

sc - single crochet

Instructions

All the work is made in double thread. Get both ends of the yarn ball and work with them together as normal single thread.

Triangle

Rnd 1: Ch 3

Rnd 2: 2 sc into the 3rd ch.

Rnd 3: 1 sc, 2 sc into same st

Rnd 4: 2 sc, 2 sc into same st

Rnd 5: 3 sc, 2 sc into same st

Rnd 6: 4 sc, 2 sc into same st

Rnd 7: 5 sc, 2 sc into same st

Rnd 8: 6 sc, 2 sc into same st

Rnd 9: 7 sc, 2 sc into same st

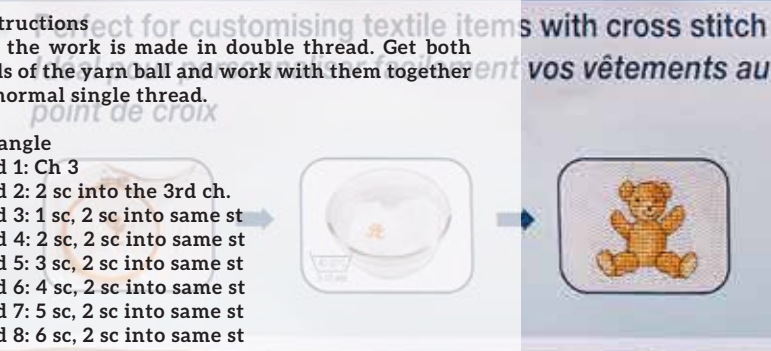
Rnd 10: 8 sc, 2 sc into same st

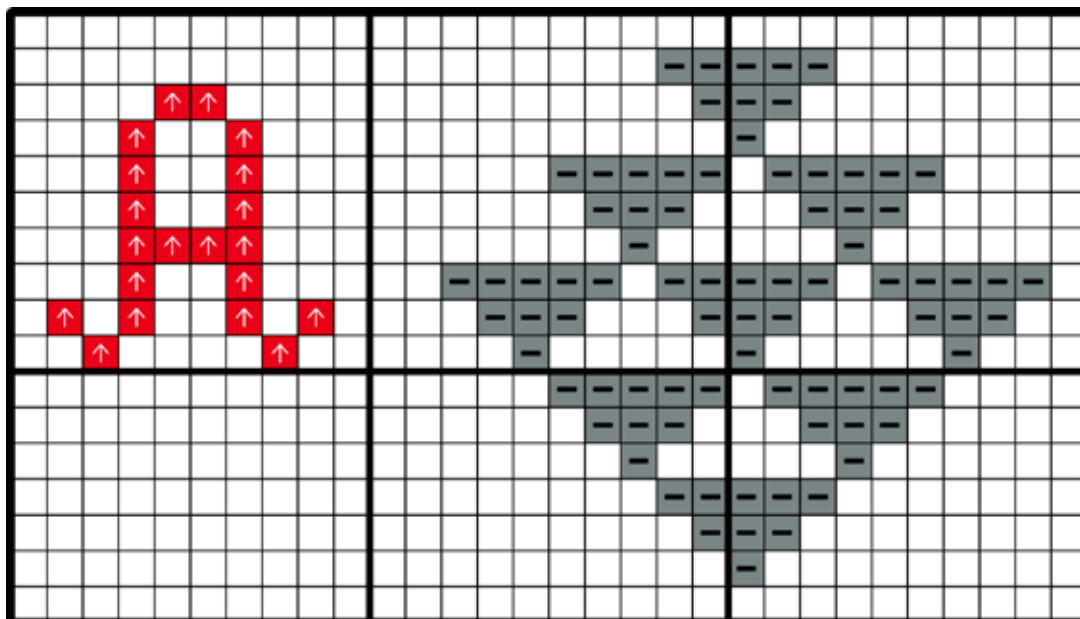
Rnd 11: 9 sc, 2 sc into same st

Rnd 12: 10 sc, 2 sc into same st

Rnd 13: surround the triangle making 1 sc into every st and rnd, sl st.

Make 14 pieces in N01 Ibiza and 14 pieces in N11 Noir





Half Triangle

- Rnd 1: Ch 3
- Rnd 2: 2 sc into the 3rd ch.
- Rnd 3: 2 sc
- Rnd 4: 1 sc, 2 sc into same st
- Rnd 5: 3 sc
- Rnd 6: 2 sc, 2 sc into same st
- Rnd 7: 4 sc
- Rnd 8: 3 sc, 2 sc into same st
- Rnd 9: 5 sc
- Rnd 10: 4 sc, 2 sc into same st
- Rnd 11: 6 sc
- Rnd 12: surround the half triangle making 1 sc into every st and rnd, sl st.

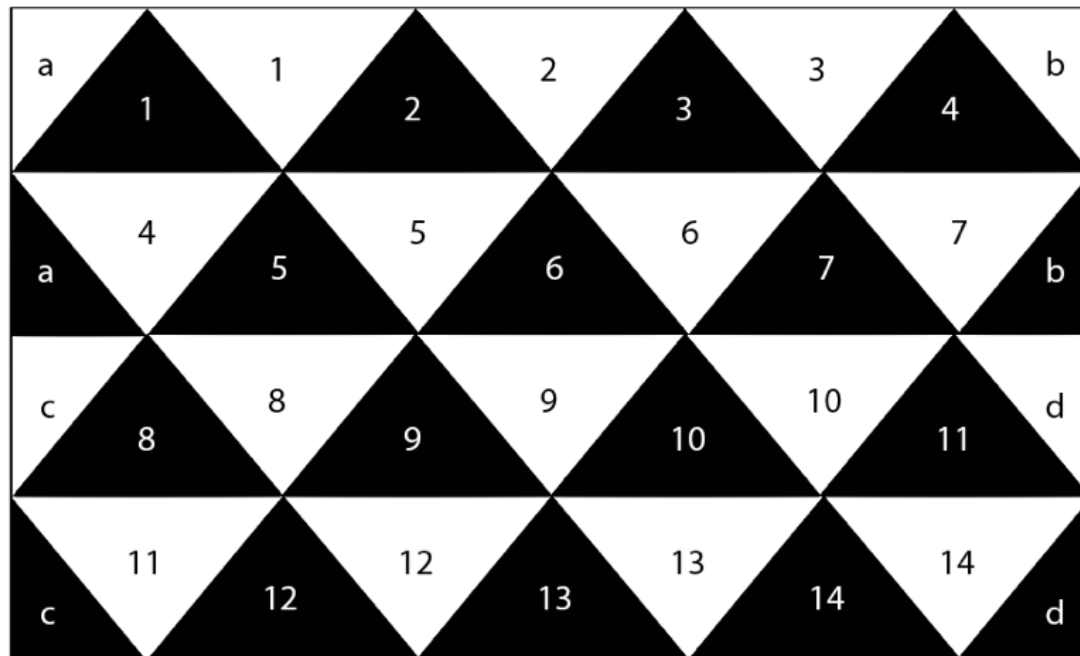
Make 4 pieces in N01 Ibiza and 4 pieces in N11 Noir

Assembly

Moisten and block the triangles over a pillow before join them.

Use N11 Noir and a DMC tapestry needle to join the triangles together. Follow the picture.

Once all the triangles are joined together, surround the placemat making 1 sc into every st and rnd, sl st.



COMMONTHREAD

The new handmade brand
brought to you by DMC
www.Commonthread.us

Visit us on    

